



**PARADISE MANSION**  
APARTMENT

**JANGAN  
LEWATKAN**

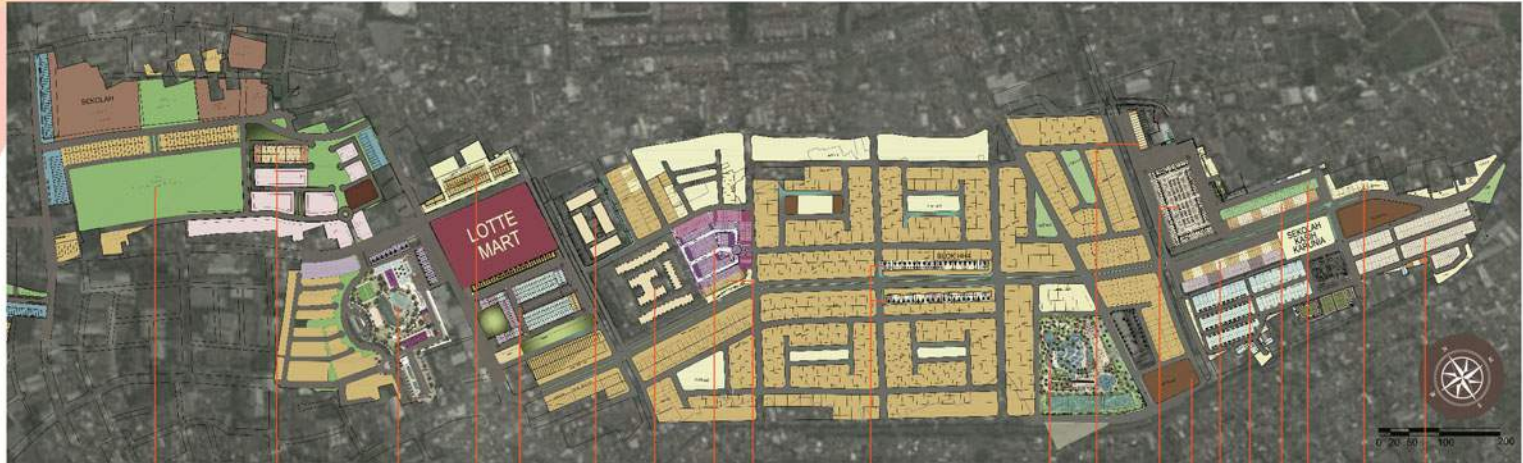
**4** juta

**3x BAYAR  
LANGSUNG AKAD**

Syarat dan ketentuan berlaku



# MASTER PLAN PALM CITY



1. Central Park
2. Palm Orchard
3. **Paradise Mansion**
4. CDB Palm
5. CBD Palm Extension

6. Palm Mansion Apartment
7. Permata Surya Apartment
8. Royal Palm
9. Rukan San Marino
10. Rukan Palm Crown

11. Palm Bay Water Park
12. Palm Boulevard
13. Pasar Laris Palm City
14. WTP
15. Rukan Palm Avenue I

16. Park Residence Tahap II
17. Rukan Palm Avenue II
18. Townhouse Avenue
19. Park Residence Extension
20. Park Residence Tahap II



## THE PROJECT

Paradise Mansion Apartment memiliki konsep *one stop living* yang akan memudahkan aktivitas Anda. Berada di kawasan yang sedang berkembang dan dikelilingi oleh pasar modern, ruko, hipermarket, *water park*, sekolah-sekolah, fasilitas kesehatan, dan wisata kuliner terbesar di Jakarta Barat.

Terdiri atas 2 tower, Paradise Mansion menyediakan fasilitas standar berupa *fiber optic to the unit* yang berarti Anda bisa memiliki *line telepon, broadband internet, dan cable TV* sekaligus. Keamanan dijamin dengan adanya sekuriti 24 jam, akses kartu dan dipantau CCTV. Fasilitas pelengkap seperti *sport club, swimming pool, jogging track*, taman-taman rekreasi tidak lupa disediakan.

Kemudahan akses tak dilupakan dengan adanya TOL SEDYATMO, TOL JORR, dan yang akan hadir TOL SEMANAN-SUNTER. Transportasi masal juga tersedia disekitar lokasi seperti KA dan Transjakarta memberikan nilai tambah bagi investasi Anda di Paradise Mansion.



Kanaan Global School

Ciputra Hospital

Lotte Mart

Dian Harapan School

## PROJECT SITEPLAN

- 1 Paradise Lagoon
- 2 Swimming Pool (@ Aspen Tower)
- 3 Child Pool (@ Aspen Tower)
- 4, 5 Children Playground
- 6, 7, 8 Interlude Area
- 9 Swimming Pool (@ Maple Tower)
- 10 Child Pool (@ Maple Tower)
- 11 Jogging Track
- 12 Cosmo Health and Fitness ( 450 m<sup>2</sup>- 1<sup>st</sup> Floor)

### JADE GARDEN (2<sup>nd</sup> Floor) :

- 13, 14 Children Playground
- 15 Jogging Track
- 16 Lotus Hall ( 250 m<sup>2</sup> multi function hall)
- 17 Health Care Clinic ( 100 m<sup>2</sup> )

### SKY POOL (8<sup>th</sup> Floor) :

- 18 Adult Swimming Pool
- 19 Child Pool

### MAPLE TOWER'S LOBBY :

- A West Lobby
- B East Lobby

### ASPEN TOWER'S LOBBY :

- C South Lobby
- D East Lobby
- E North Lobby

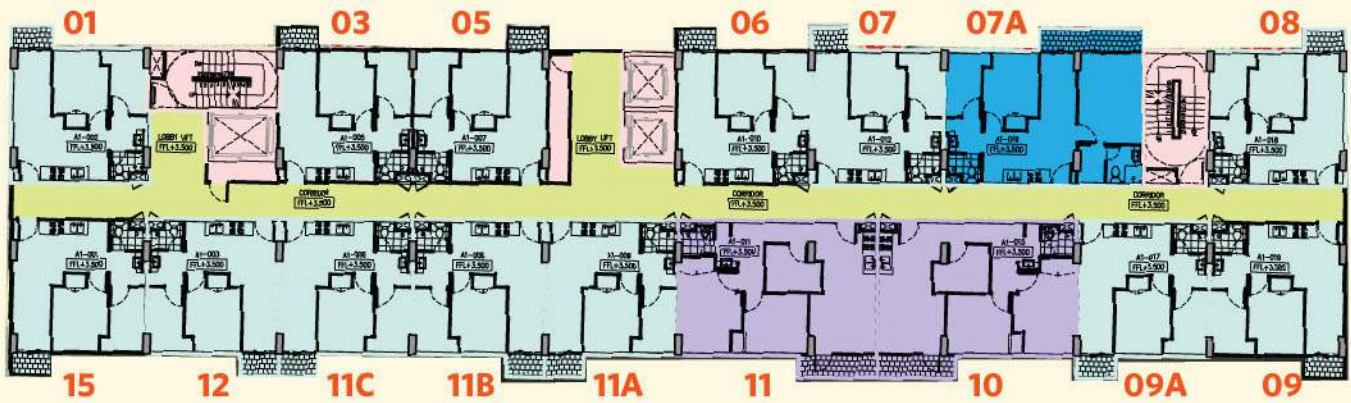


# MAPLE TYPICAL FLOORPLAN

PEONY

AZALEA

MARIGOLD



LIFT PASSENGER : 2 units  
LIFT UTILITY : 1 unit

Setiap unit sudah dilengkapi  
\* Fiber optic to the unit (Telepon - Broadband Internet - Cable TV)  
\* Smoke Detector  
\* Fire Sprinkler

## PEONY

Studio (1 Bed)  
Semi Gross : 24.71 m<sup>2</sup>  
Nett : 21 m<sup>2</sup>



HARGA SPESIAL

**485** Juta\*

CICILAN

**4** jt/bln\*

**3x BAYAR LANGSUNG AKAD**

1. Bedroom / Living Area
2. Balcony
3. Kitchen
4. Bathroom

Daya PLN 1300 VA

# AZALEA

2 Bedroom  
Semi Gross : 44.71 m<sup>2</sup>  
Nett : 38 m<sup>2</sup>

HARGA SPESIAL

**823** Juta\*

CICILAN

**7.9** jt/bln\*

**3x BAYAR  
LANGSUNG AKAD**

1. Master Bedroom
2. Bedroom/Study Room
3. Living Room
4. Balcony
5. Dining Area
6. Kitchen
7. Laundry/Utilities
8. Bathroom

Daya PLN 2200 VA



# MARIGOLD

3 Bedroom  
Semi Gross : 74.12 m<sup>2</sup>  
Nett : 63 m<sup>2</sup>

HARGA SPESIAL

**1.246** M\*

CICILAN

**12.2** jt/bln\*

**15x BAYAR  
LANGSUNG AKAD**

1. Master Bedroom
2. Bedroom
3. Bedroom/Study Room
4. Living Room
5. Balcony
6. Dining Area
7. Kitchen
8. Laundry/Utilities
9. Bathroom

Daya PLN 2200 VA



# PETA LOKASI



15 menit  
PIK

15 menit  
Puri Mall

15 menit  
Airport

10 menit  
JORR



## MARKETING GALLERY

Jl. Paradise Boulevard Selatan Blok Paradise 2  
(depan Lotte Mart Taman Surya), Jakarta Barat

[www.palmcity.co.id](http://www.palmcity.co.id)

Another prestigious development by :



021 **559 558 89**



Semua data terlampir berdasarkan situasi & kondisi pada masa persiapan. Perubahan dapat terjadi sewaktu-waktu dan merupakan hak penuh developer.